

AIR CURTAINS INSTALLATION MANUAL

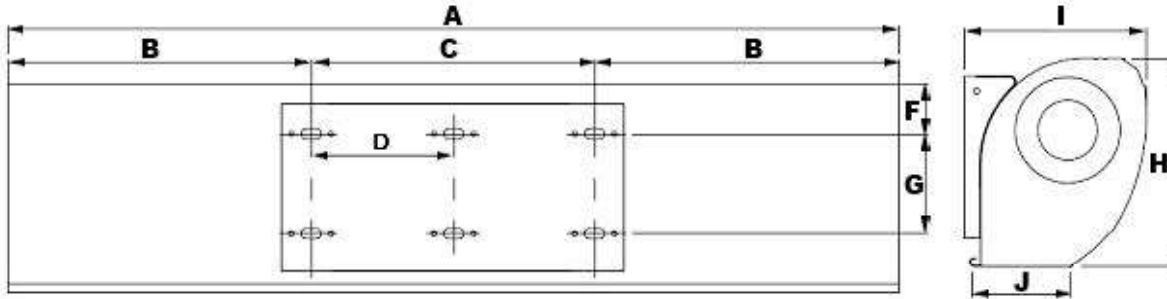


**Thanks for purchasing Carrier Air Curtain,
Please read this installation manual carefully before use.**

1、PRODUCT INTRODUCTION

As one of the new top-class products for modern decoration, air curtain is also matched with the air-conditioner. And it is installed at the entrances of supermarket, theater, meeting room, hotel, office room, and storeroom to prevent the dust, mosquito and warm air, and so on.

2、IDENTIFICATION & INSTALLATION DIMENSIONS

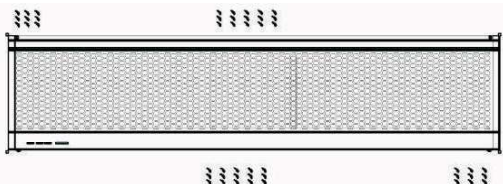


MODEL	A	B	C	D	F	G	H	I	J
ACU-90R	900	330	440	---	55	90	210	190	110
ACU-120R	1200	480		---					
ACU-150R	1500	330	840	---					
ACU-180R	1800	480		---					

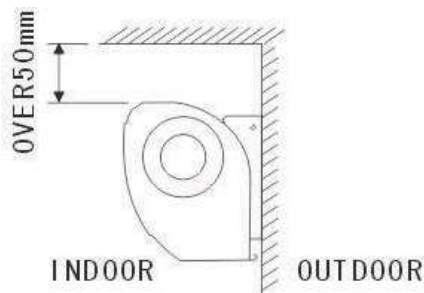
3、INSTALLATION CAUTION

Before installation, please apply the same voltage and frequency, then follow the below requests when install the air curtain:

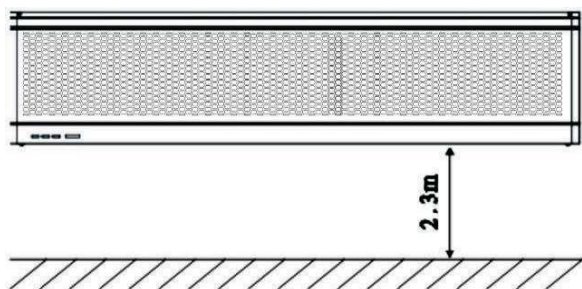
3.1 Please install the unit in a sturdy place to avoid the shaking and ensure its security (because it maybe causes the wall becoming flexible or shaking and noising.)



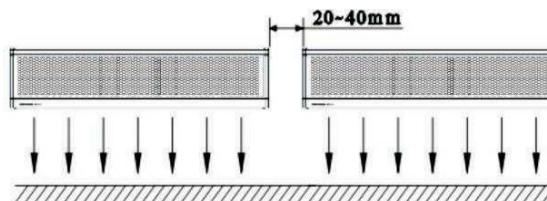
3.2 Please install the unit inside the room.



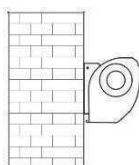
3.3 Don't install the unit too low, no less than 2.3 meters from the ground.



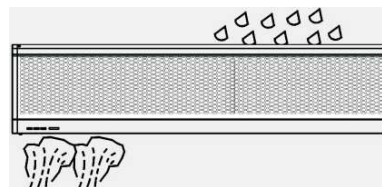
3.4 When the entrance is wider than the unit, it is recommended to install two or more units in parallel. In this case, provide 20-40mm gaps between the units.



3.5 Don't allow gaps between the unit and the wall. When hanging it from the ceiling, purchase the extra ceiling brackets.

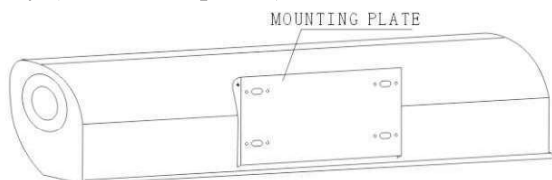


3.6 Don't install the unit in a place where it is splashed by water, exposed to excessive steam, explosive gas or corrosive gas.

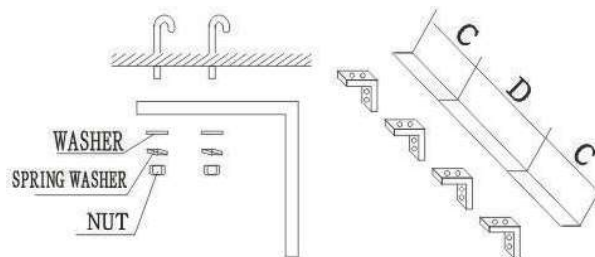


C、 Hanging from the ceiling

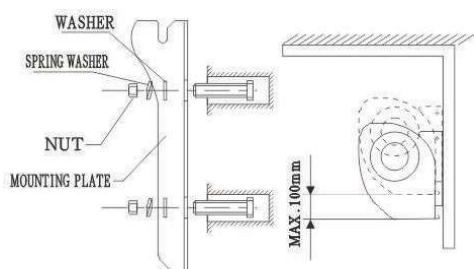
4.3.1 Remove the mounting plate from main body (Same as step 4.1.1)



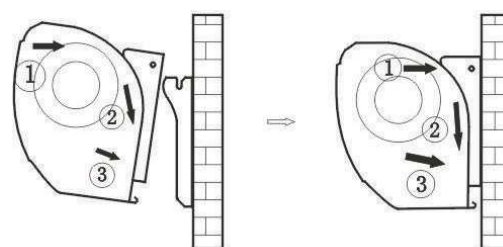
4.3.2 Fixing ceiling brackets as Fig.



4.3.3 Set the mounting plate on the ceiling brackets and ensure safety & fixing (use the bolts attached to the ceiling brackets as Fig. Using the ceiling brackets to hang from the ceiling, the position of mounting plate can be adjusted in the limit of 100mm.

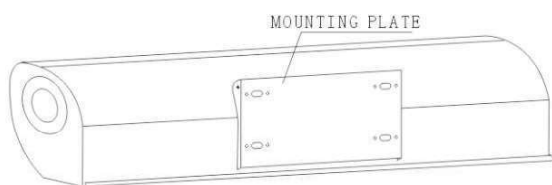


4.3.4 Do the same as step A to install the main body.

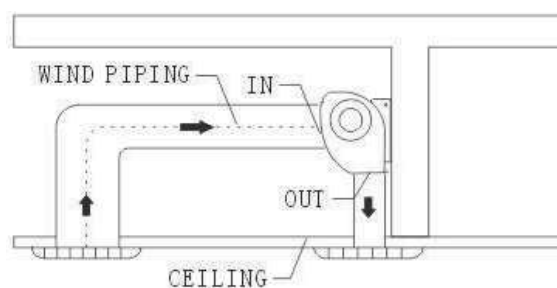


D、 For above ceiling

4.4.1 Fix the air curtain as in the procedure for installing on the concrete wall.



4.4.2 Then install the pipe as below.



5、 TECHNICAL PARAMETER

MODEL	Volt. (V~)	Freq (Hz)	Max input power (W)		Max air speed (m/s)		Air volume (m ³ /h)		Noise (dB)		Net weight (Kg)
			H	L	H	L	H	L	H	L	
ACU-90R	220	50	160	110	11	9	1400	1100	57	55	10
ACU-120R			200	150			1900	1600	58	56	12
ACU-150R			230	180			2500	2000	59	57	13.5
ACU-180R			300	360			3200	2600	60	58	15